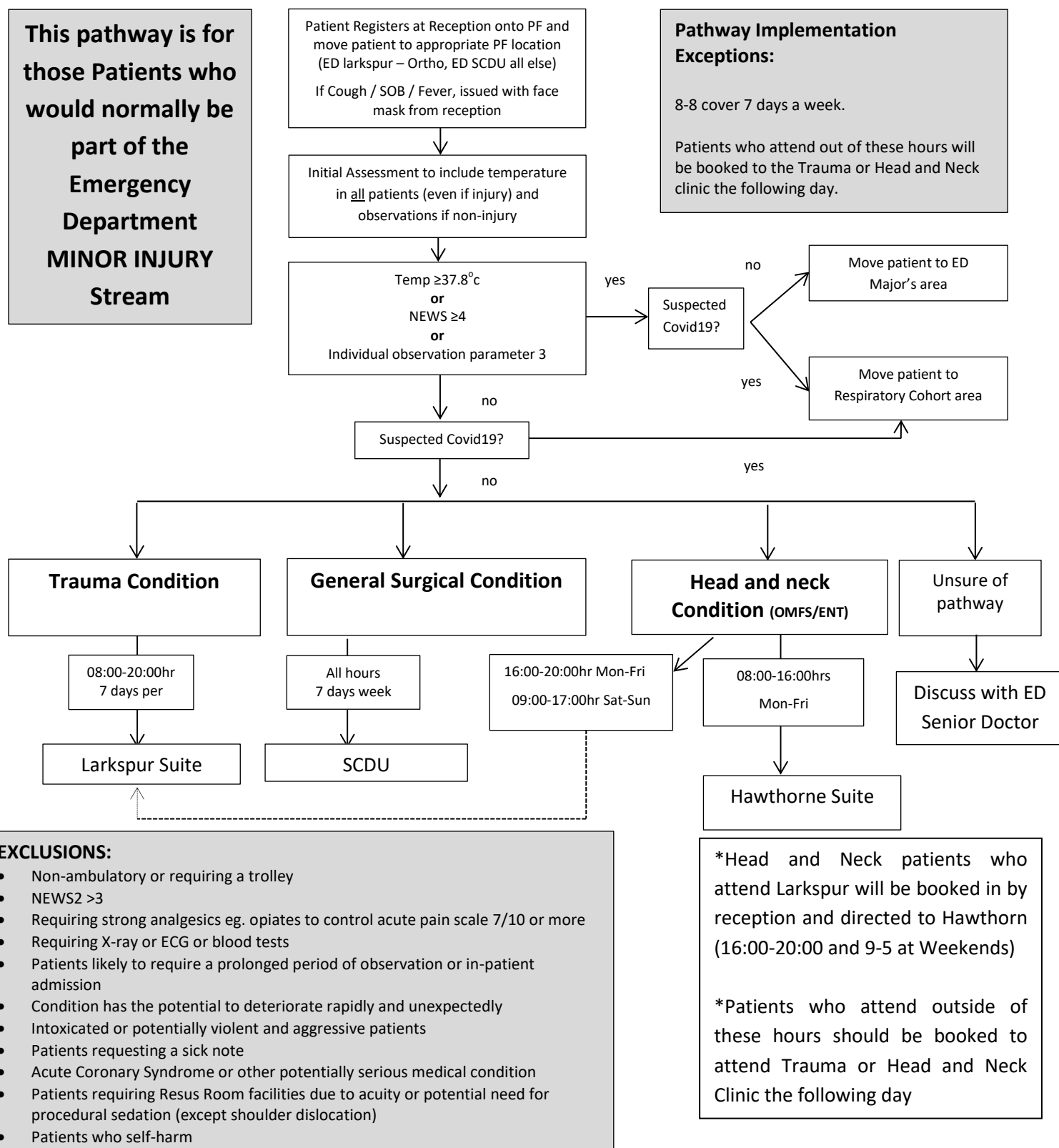


Management of Self Presenting Patients to WRH ED during Covid-19 Pandemic

31.03.2020



Box1. **'Trauma conditions'** (not exhaustive)

- Self-presenting possible basic fracture of foot, ankle, wrist, elbow and hand
- Knee injuries excluding septic arthritis
- Foreign body – excluding eye, ear, nose, throat
- Minor dog or cat bite
- Basic paediatric injuries that will not require any surgical input
- Minor wounds
- Traumatic injuries incl. fractures, dislocations, sprains and lacerations
- Head injury
- Needlestick injury

If they do, please triage the patient and send them directly to the orthopaedic clinic with their notes and labels.

NO XRAY IS REQUIRED

**NO LARGE JOINT DISLOCATIONS
TO BE SENT DIRECT**

Box 2. **'Surgical' conditions** (not exhaustive)

- Chest wall injuries
- Abscesses
- Anorectal problems
- Urological (retention, testicular pain, penile problems)
- ENT/OMFS conditions excluding potential airway compromise or life-threatening haemorrhage

Box 3. **'Head and Neck' conditions** (not exhaustive)

- OMFS patients with dental abscesses that can be treated under LA
- Patients with lacerations requiring suturing under LA
- OMFS patients with #mandible who are suitable for stabilisation and return for TCI.
- Foreign body in ear, nose or throat
- Dentoalveolar injuries requiring tooth re-implantation and splinting.
- ENT patients with epistaxis who are suitable for stabilisation and report for review.
- ENT patients with acute tonsillitis who are suitable for the Portsmouth protocol.