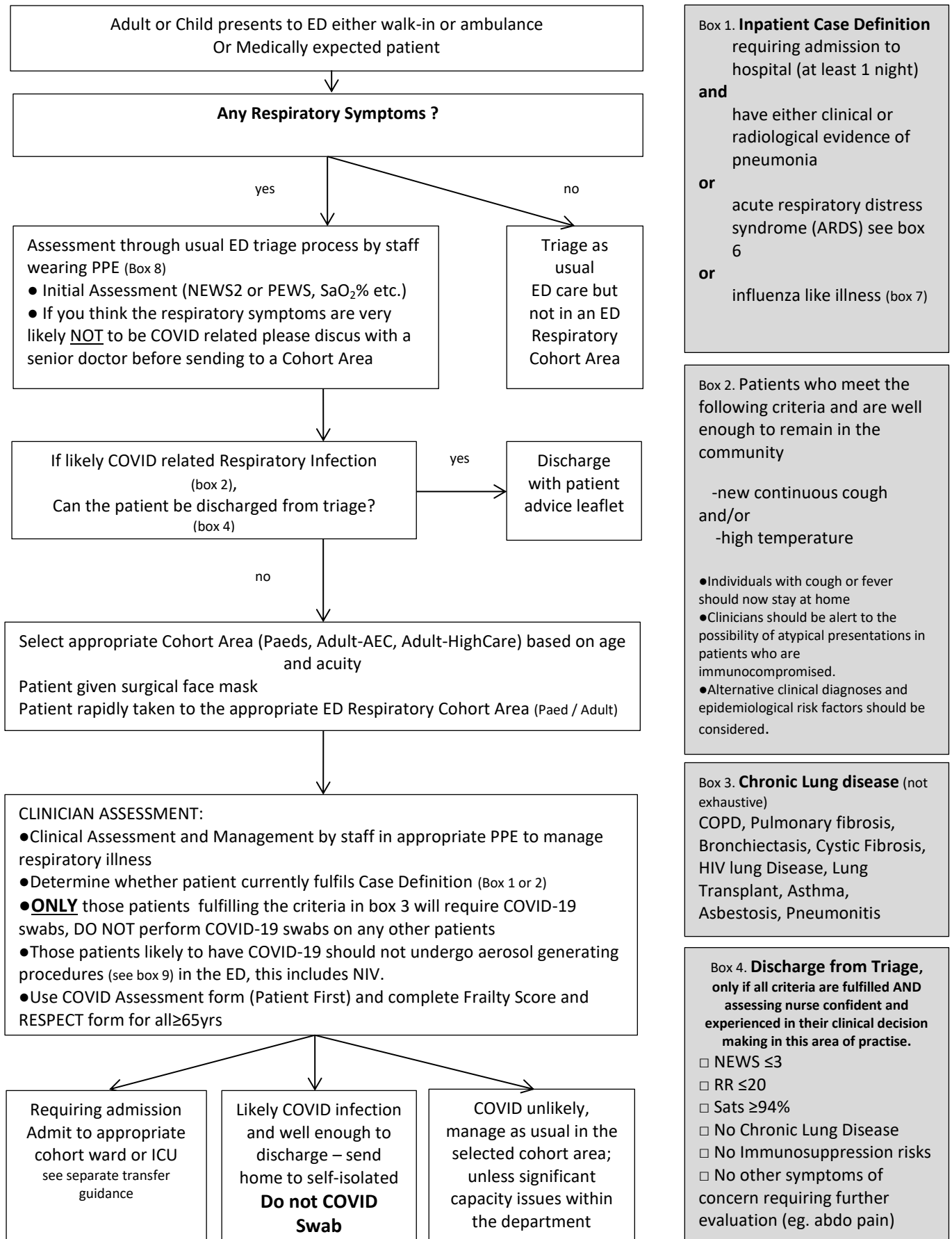


## WRH Emergency Department Cohorting of Respiratory presentations in Adults & Children during COVID-19 Outbreak



**Box 5. COVID Swab**

Nose swab (not individual swab for each nostril) Green  
Throat swab White with an ICE request for Covid (WCOV)

We then need the same set of swabs for Flu testing again with an ICE request for Flu

No biobottles are required for samples coming within the Trust.

However samples taxi'd through from the Alex need to come in the biobottles previously supplied.

**Box 6. Acute Respiratory Distress Syndrome (ARDS)**

Acute respiratory distress syndrome (ARDS) is a non-cardiogenic pulmonary oedema and diffuse lung inflammation syndrome that often complicates critical illness. The diagnosis of ARDS is based on fulfilling three criteria:

- Acute onset (within 1 week)
- Bilateral opacities on chest x-ray
- PaO<sub>2</sub>/FiO<sub>2</sub> (arterial to inspired oxygen) ratio of ≤300 on positive end-expiratory pressure (PEEP) or continuous positive airway pressure (CPAP) ≥5 cm H<sub>2</sub>O.

**Box 7. Influenza Like Illness**

● Fever ≥37.8°C  
and at least one of the following respiratory symptoms, which must be of acute onset:

- Persistent Cough (with or without sputum),
- Hoarseness
- Nasal discharge or congestion
- Shortness of breath
- Sore throat
- Wheezing,
- Sneezing

**Box 8. PPE Requirement**

Non-aerosol generating procedures	Aerosol Generating Procedures (see box 9)
<ul style="list-style-type: none"> <li>● Wash hands</li> <li>● Apron</li> <li>● Surgical Face Mask moulded over bridge of nose</li> <li>● Eye Protection</li> <li>● Gloves</li> </ul>	<ul style="list-style-type: none"> <li>● Wash Hands</li> <li>● Long-sleeved fluid repellent disposable gown</li> <li>● FFP3 Respirator mask, ensure fitted well</li> <li>● Eye Protection</li> <li>● Gloves</li> </ul>

**Box 9. Aerosol generating procedures (AGP)**

- Cardiopulmonary Resuscitation
- Non-invasive ventilation (NIV) such as Bi-level Positive Airway Pressure (BiPAP) and Continuous Positive Airway Pressure ventilation (CPAP)
- Intubation, extubation and related procedures such as manual ventilation and open suctioning
- Tracheotomy/tracheostomy procedures (insertion/open suctioning/removal)
- Bronchoscopy
- Surgery and post-mortem procedures involving high-speed devices
- Some dental procedures (such as high-speed drilling)
- High-Frequency Oscillating Ventilation (HFOV)
- High Flow Nasal Oxygen (HFNO), also called High Flow Nasal Cannula
- Induction of sputum

Note: Administration of medication via **nebulisation** is NOT an AGP. Where AGPs are medically necessary, they should be undertaken in a negative-pressure room, if available, or in a single room with the door closed.