

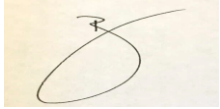



# **West Midlands Cancer Alliance Management Pathway for Patients with a Pelvic Mass**

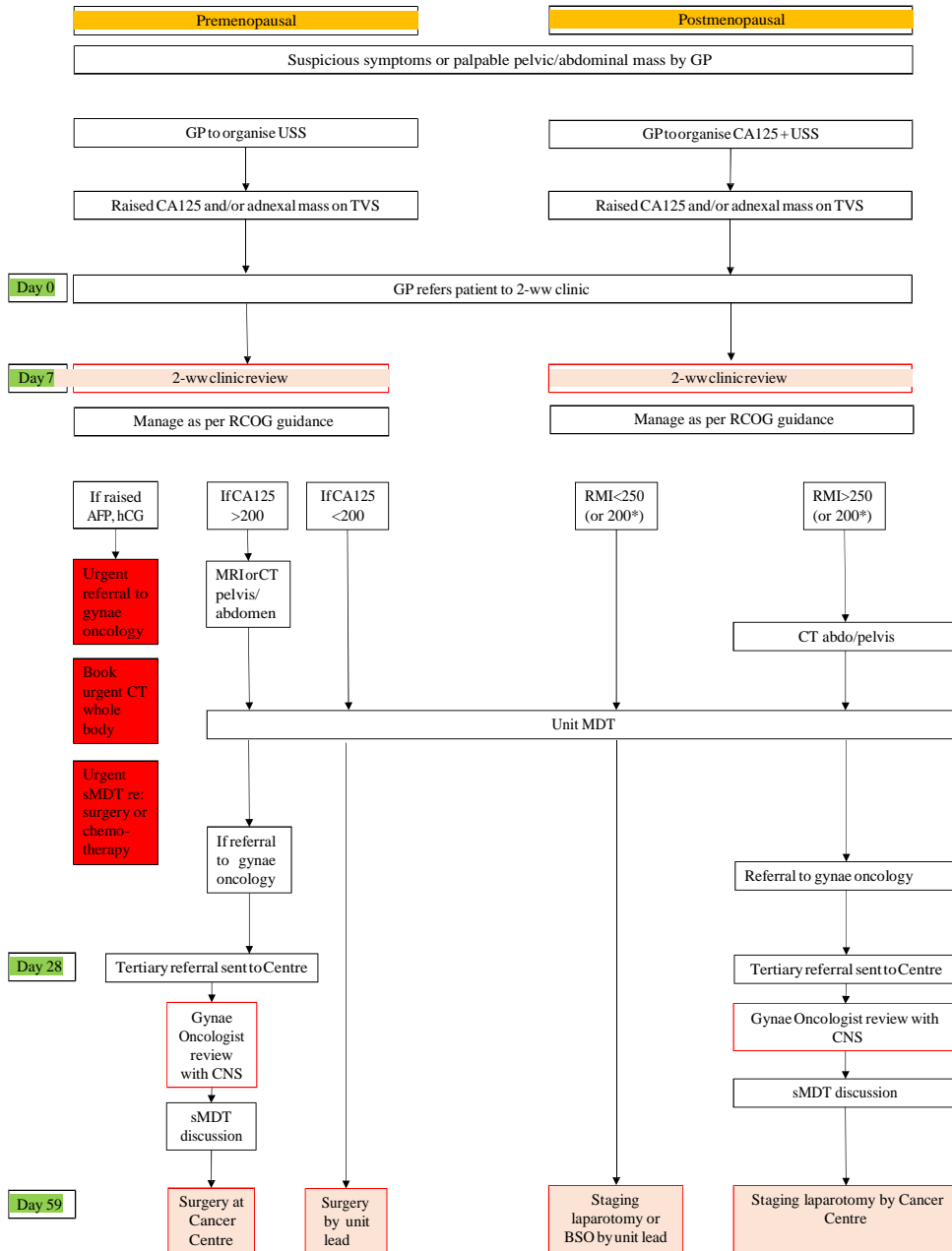
# West Midlands Cancer Alliance

## Coversheet for Cancer Alliance Expert Advisory Group Agreed Documentation

This sheet is to accompany all documentation agreed by the West Midlands Cancer Alliance Expert Advisory Groups. This will assist the Cancer Alliance to endorse the documentation and request implementation.

<b>EAG name</b>	Gynaecology	
<b>Document Title</b>	Management Pathway for Patients with a Pelvic Mass	
<b>Published date</b>	May 2019	
<b>Document Purpose</b>	This guidance has been produced to support the management of patients with a pelvic mass	
<b>Authors</b>		
<b>Review Date</b> (must be within three years)	May 2022	
<b>Approval Signatures:</b>	<b>EAG Chair</b>	<b>Cancer Alliance Clinical Director</b>
	 Mr Janos Balega Date: 07 May 2019	 Date: 07 May 2019

## West Midlands Management Pathway for Patients with a Pelvic Mass



\* Dependent on local guidelines