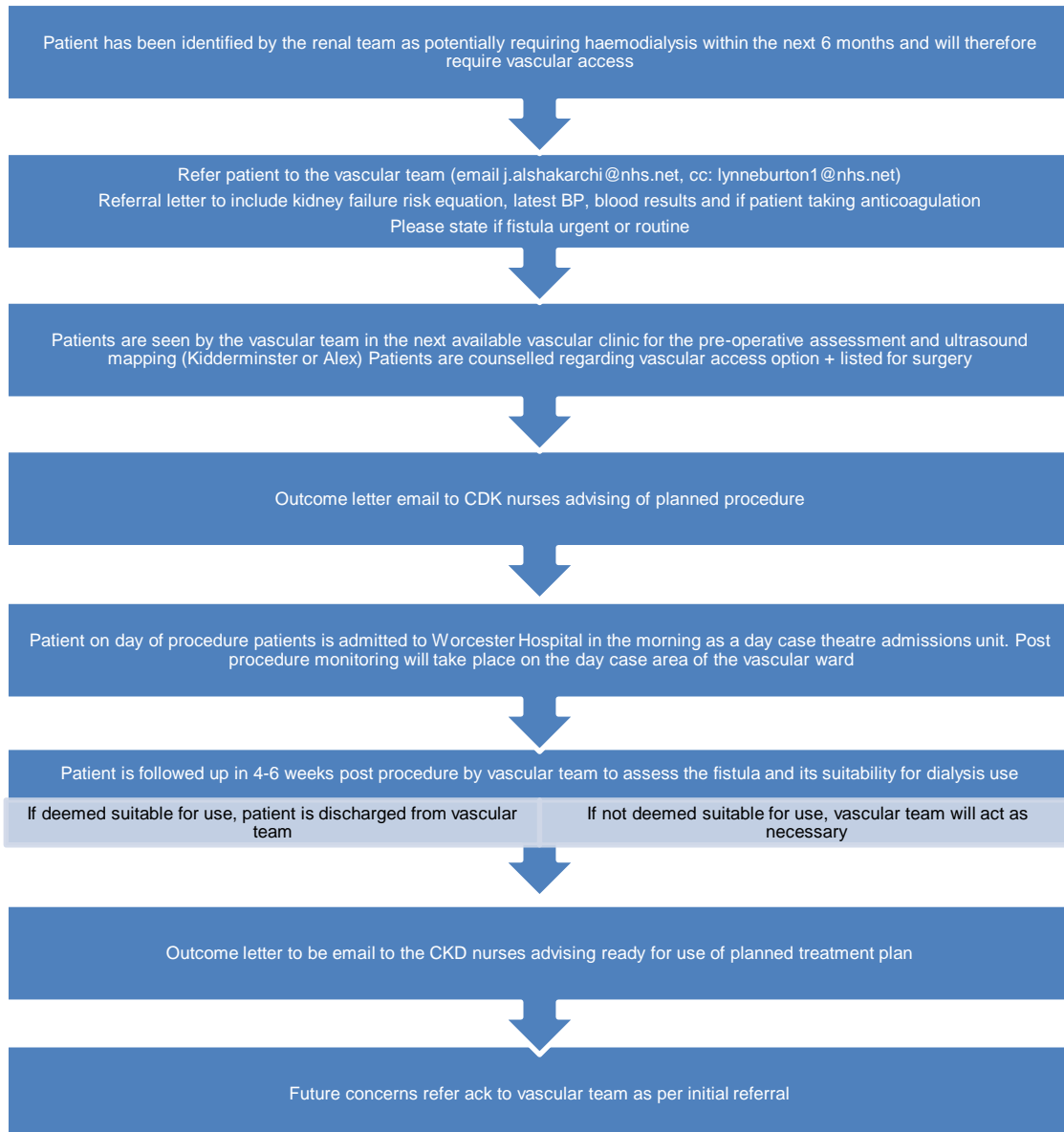


## VASCULAR ACCESS REFERRAL PATHWAY FOR PATIENTS WITH ADVANCED PREDIALYSIS CKD ATTENDING THE KIDDERMINSTER TREATMENT CENTRE RENAL CLINIC

<b>Department / Service:</b> Renal Medicine
<b>Originator:</b>
<b>Accountable Director:</b>
<b>Approved by:</b> Divisional Management Board
<b>Approved by Medicines Safety Committee:</b>  <i>Where medicines included in guideline</i>
<b>Date of Approval:</b> 29 <sup>th</sup> January 2024
<b>Review Date:</b> 29 <sup>th</sup> January 2027 <b>This is the most current document and should be used until a revised version is in place</b>
<b>Target Organisation(s)</b> Worcestershire Acute Hospitals NHS Trust
<b>Target Departments</b>
<b>Target staff categories</b>

### Key amendments to this Document:

Date	Amendment	By:
29 <sup>th</sup> January 2024	Document reviewed and approved for publication	Divisional Management Board



**Additional points for referral:**

1. Referral to Vascular team in Worcester Royal Hospital will be the first choice for the patient
2. If patient unable to travel to Worcester Royal Hospital for AV fistula formation or if there are any unforeseen delays to the procedure, then patient will be referred to vascular team in Russells Hall Hospital for AV fistula formation.
3. Please copy all correspondence letters for AVF formation to Dr K Shivakumar consultant nephrologist at Russells Hall Hospital.
4. CKD nurse to refer patient to Dr Shivakumar once GFR is < 15 mls/min to commence Hepatitis B vaccinations. Dr Shivakumar to copy CKD nurse and Kidderminster renal clinic consultant in correspondence letter confirming referral for Hepatitis B vaccination.
5. For complex vascular access procedures, CKD nurse in Kidderminster to refer to UHB vascular access team.