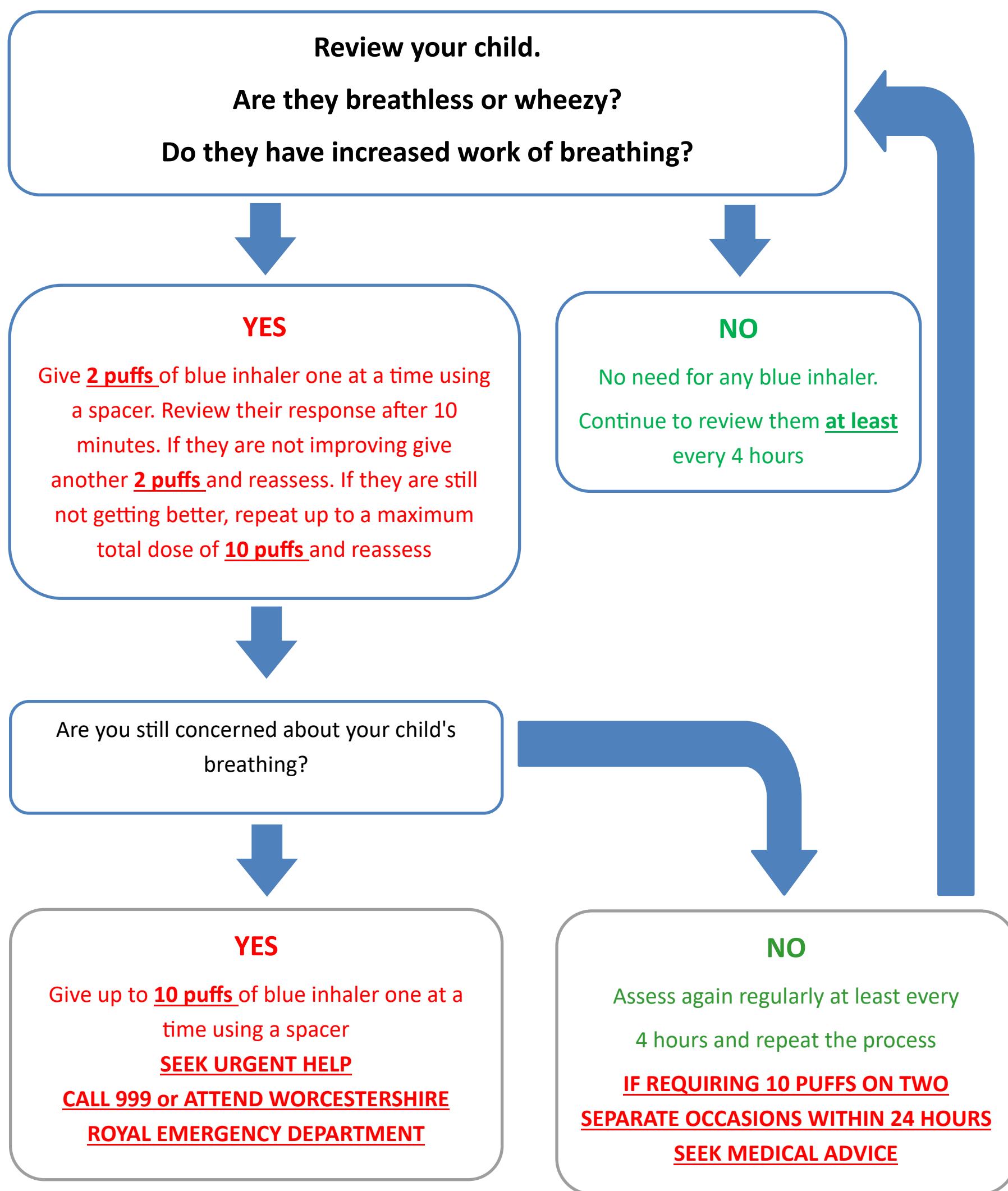




Discharge / Escalation advice



You might need to give some blue inhaler every 4 hours initially. Your child should need less as they recover. You should see an improvement within 48 hours. If your child is regularly requiring the blue inhaler 5 days after discharge, please see your GP for review.

IF YOU ARE CONCERNED ABOUT YOUR CHILD OR THEY NEED MORE THAN 10 PUFFS WITHIN 4 HOURS YOU MUST SEEK URGENT MEDICAL HELP VIA 111, YOUR GP OR BY GOING STRAIGHT TO WORCESTERSHIRE ROYAL EMERGENCY DEPARTMENT.

Call 999 if your child has severe symptoms